

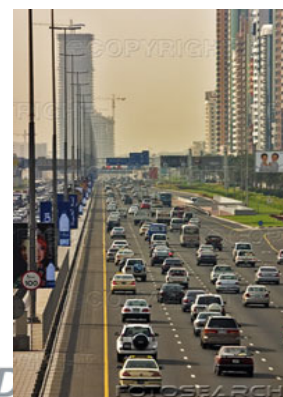
Typical Concession Arrangement

con·ces·sion

(1) a grant of land or property especially by a government in return for services or for a particular use (2): a right to undertake and profit by a specified activity (3): a lease of a portion of premises for a particular purpose;

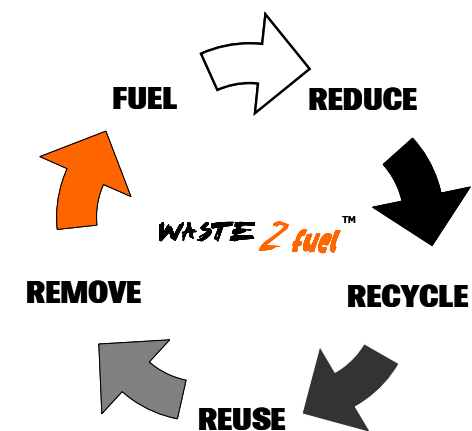
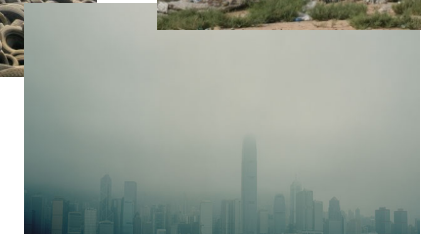
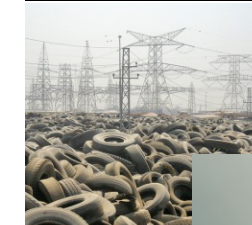


The City or Public Transport Authority



The local Municipality

Waste & Recycling Services
Environmental & Safety Management



A. To affectively implement **THE WASTE & EMISSIONS PROGRAM** a concession shall be formulated to get the commitment from the city/municipality/government
B. The concession shall be formulated with the sole purpose of providing fuel for transportation needs to support sustainability

Whose responsibilities are as follows:-

- The waste shall come from landfills, industry and the local shipping business
- The waste that shall to be processed shall be biomass, organic matter, waste plastic and waste oils etc.
- Municipalities shall provide necessary licenses and rights to the generate fuel, collection and sorting of waste, access to the waste material, bulk handling equipment & personnel, raw material , land for the processing plant, environmental monitoring of the plant and reconstituting the land fill sites that have been cleared
- The City/Public Transport Authority shall collect and distribute the agreed fees, deliver the advertising and marketing campaign necessary for public awareness, improve public transport and air emissions controls and reduce the number of vehicles on the roads
- **Waste 2 fuel™** shall provide the technology, the plant and the operational staff necessary for the supply of fuel recovered from waste for The City & Municipality